

Night owl

Best friend

Gourmet

Life-saver

Project partners

BELGIUM | IBM Belgium (administration co-ordination), Katholieke Universiteit Leuven

FRANCE | LAAS-CNRS

GERMANY | Deutsche Lufthansa, Johann Wolfgang Goethe-Universität Frankfurt am Main, RWTH Aachen, Technische Universität Dresden, T-Mobile, Unabhängiges Landeszentrum für Datenschutz Schleswig-Holstein

ITALY | Fondazione Centro San Raffaele del Monte Tabor, Joint Research Centre/IPSC, Università di Milano

NETHERLANDS | Erasmus University Rotterdam, Universiteit van Tilburg

SWEDEN | Karlstads Universitet

SWITZERLAND | IBM Zürich Research Laboratory (technical lead), Swisscom

UK | Hewlett-Packard

USA | Chaum LLC

Registration for Closing Event

DATE: 21 July 2008
LOCATION: Katholieke Universiteit Leuven
 College De Valk, Tiensestraat 41
 Leuven, Belgium
FEE: € 35,-
REGISTER AT: <http://petsymposium.org/2008/>



SIXTH FRAMEWORK PROGRAMME



Information Society
Technologies

Closing Event contact

PRIME, c/o Marit Hansen
 Unabhängiges Landeszentrum für Datenschutz
 Holstenstrasse 98
 D-24103 Kiel
 Germany

Further information

www.prime-project.eu
www.petsymposium.org/2008/



PRIVACY AND IDENTITY MANAGEMENT FOR EUROPE

GESTALTUNG: EYEKEY DESIGN



PRIME



Identity Management and the focus of PRIME

All social and economic interactions between human beings in modern civilisation require the exchange of some personal data. The decision on what data to make available is made intuitively in normal life, for instance, the one of whether or not to state your name when shaking hands. In the on-line world, every person has to handle numerous accounts and data sets. These so-called "partial identities" will increasingly play a key role in future electronic services as well as in public security (e.g., border controls). They may very well convey sensitive personal data, such as patient health data, employee data, credit card data, etc.

Surveys have shown that people now feel their privacy is at risk from identity theft and the erosion of individual rights. In the Information Society people want to interact securely and safely while maintaining control over their personal data.

PRIME focuses on solutions for privacy-enhancing identity management that supports end-users' sovereignty over their private sphere while facilitating enterprises' privacy-compliant data processing.

The goal of PRIME and its prototype

Besides its research on identity one priority of the PRIME project was to develop a prototype for an user centric Identity Management and several application prototypes. All prototypes and the results of PRIME research on basic models for the architecture of identity management and for supporting cryptographic methods will be presented to an interested audience at the project's Closing Event on 21 July 2008.



Tourist

Bride

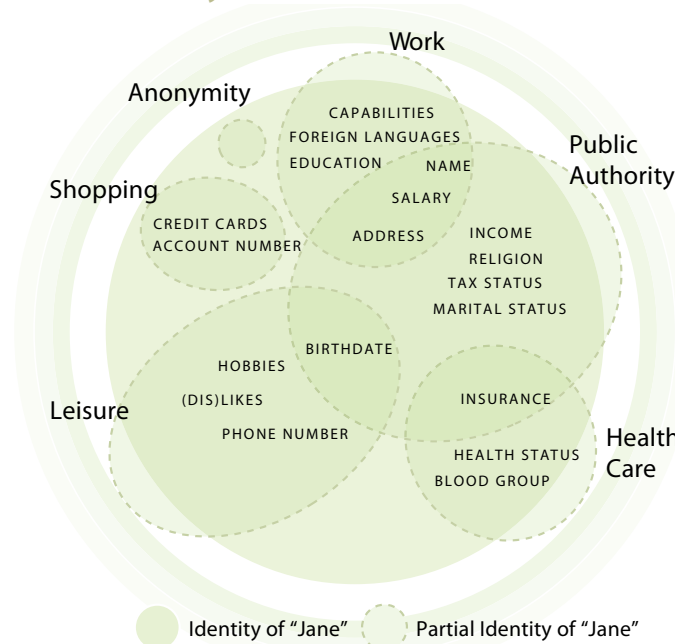
Grump

Co-located events

The PRIME Closing Event is held in co-location with the 8th Privacy Enhancing Technologies Symposium (PETS 2008), the Workshop on Trustworthy Elections (WOTE 2008) and workshops from the projects Advanced Applications for Electronic Identity Cards in Flanders (adapID) and Future of Identity in the Information Society (FIDIS) during the week 21 - 25 July 2008:

	Mo	Tue	Wed	Thu	Fri
morning	PRIME	adapID WOTE	PETS '08 WOTE	PETS '08	PETS '08
afternoon	PRIME	FIDIS WOTE	PETS '08 WOTE	PETS '08	PETS '08

* Identity of Jane

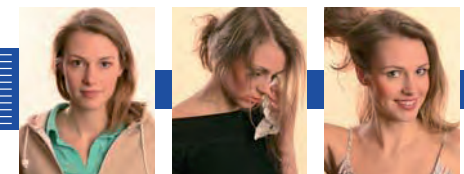


Participate in the future of Privacy-Enhancing Identity Management!

Agenda, 21 July 2008

- 9:00 Registration
- 9:30 **Keynotes**
Keynotes will be held by renowned privacy protection experts
PRIME architecture
- 10:30 **Social and legal landscape**
Requirements, tutorials, policies standardisation
- 14:00 **Prototypes**
Research on Human-Computer Interaction, display of integrated prototype and application prototypes: idemix, BluES'n – Collaborative eLearning, Location Based Services, OnionCoffee, Online Prescription in eHealth
- 16:30 **PRIME impact**
Presentation of PRIME research results and how they influenced follow-up projects and spin-offs
- 17:45 **Panel discussion "Prime and beyond"**
Panel on PRIME's impact and the future development of identity management
- 18:45 Reception

* Agenda is subject to change.



Me

Softie

Charmer
